

CDD MEDICALLY FRAGILE CASE MANAGEMENT NEWSLETTER

July 2024



CENTER FOR
DEVELOPMENT
& DISABILITY

Inside this issue:

Pg.2 July is Juvenile Arthritis Awareness Month

Pg.3 Med Frag News

- *Attention: ISD is returning to their typical processes and requests for information.*
- *Meet the NM Spec Ed Ombud!*
- *Your child may qualify for the Medically Fragile Waiver.*
- *Invitation to upcoming FAB meeting*

Pg.8 News from the State

- *Turquoise Care is here!*
- *Public Comments are open and needed to the NM Health Care Authority*
- *Make your voice heard to the ACQ*

Pg.11 Outside Resources

- *Dance Party for all special needs individuals!*

JULY IS JUVENILE ARTHRITIS AWARENESS MONTH

What is Juvenile Arthritis?

Juvenile arthritis refers to rheumatic diseases in children aged 16 and younger. These diseases are not just adult diseases in children; they have many distinctions and are treated differently than in adults. The most common is juvenile idiopathic arthritis (previously known as juvenile rheumatoid arthritis), and they include juvenile psoriatic arthritis, pediatric lupus and a number of others.

Hundreds of thousands of kids and teens in the United States live with juvenile idiopathic arthritis (JIA) or other pediatric rheumatic diseases. These autoimmune diseases affect not only joints but also skin, eyes and internal organs. A diagnosis can be scary, but effective treatments are available.

<https://www.arthritis.org/juvenile-arthritis-patient-education>

Juvenile Arthritis Health Effects

Here are some of the symptoms and health effects of JA:

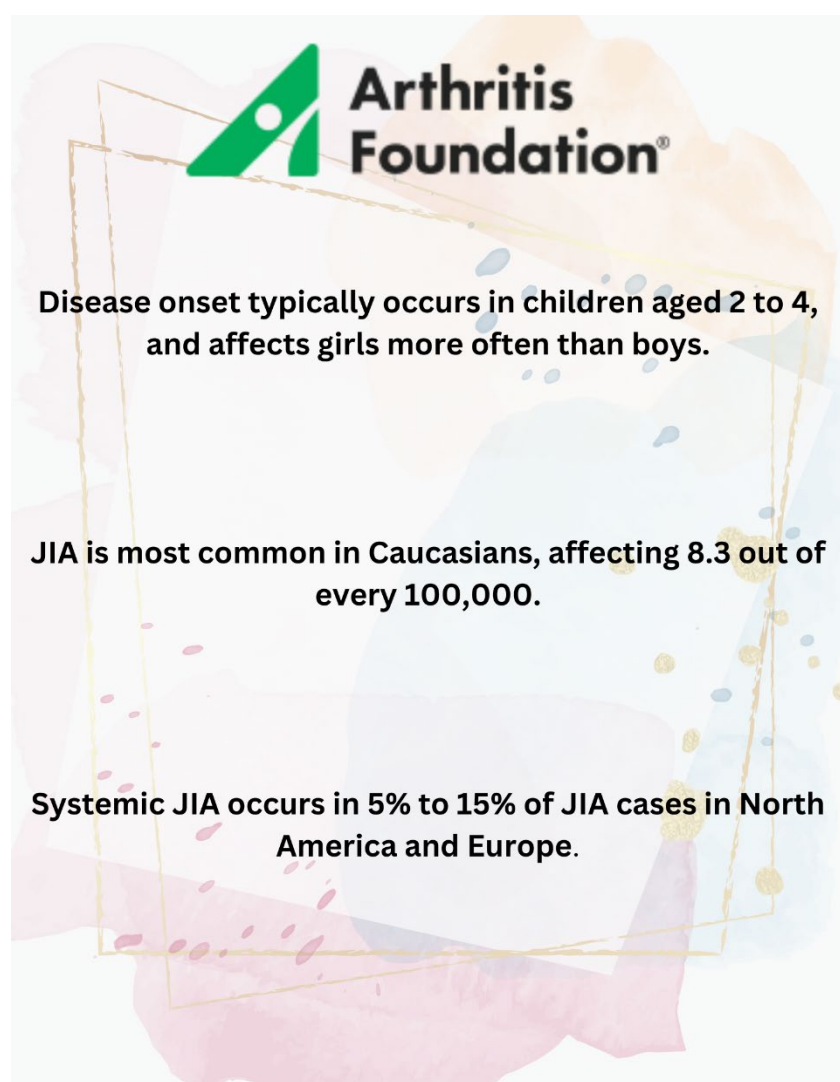
Joints: May cause joints to look red or swollen and feel stiff, painful, tender and warm. This can cause difficulty moving or completing everyday tasks. Joint symptoms may worsen after waking up or staying in one position too long.

Skin: [Skin symptoms](#) may include a scaly red rash (psoriatic), light spotted pink rash (systemic), butterfly shaped rash across the bridge of the nose and cheeks (lupus) or thick, hardened patches of skin (scleroderma).

Eyes: Dryness, pain, redness, sensitivity to light and trouble seeing properly caused by [uveitis](#) (chronic eye inflammation).

Internal organs: Can affect internal organs such as the digestive tract (diarrhea and bloating), lungs (shortness of breath) and heart.

Other symptoms: Include fatigue (feeling extremely tired or rundown), appetite loss and high spiking fever.



MED FRAG NEWS



Med Frag Waiver Families

**Attention all Medically Fragile Waiver Families,
As COVID has ended, Income Support Division (ISD) is
returning to their typical processes and requests for
information.**

You may receive a notice from ISD requesting 6-12 months' worth of medical records in order to determine ongoing disability eligibility for Medicaid.

Only enough medical records to determine ongoing disability are needed. They do not need 100s of pages.

If you receive this notice, you must respond to this request. Your RN Case Manager can assist you in responding, so please reach out to them as soon as you get the notice from ISD.

**Atención a todas las familias de exención médicamente frágiles,
Ahora que COVID ha terminado, la División de Apoyo a los Ingresos (ISD) está
volviendo a sus procesos y solicitudes de información habituales.**

Es posible que reciba un aviso del ISD solicitando registros médicos de 6 a 12 meses para determinar la elegibilidad continua por discapacidad para Medicaid.

Sólo se necesitan suficientes registros médicos para determinar la discapacidad actual. No necesitan cientos de páginas.

Si recibe este aviso, debe responder a esta solicitud. Su administrador de casos RN puede ayudarlo a responder, así que comuníquese con él tan pronto como reciba el aviso de ISD.

Meet the Ombud

Join us on zoom - Tuesday, July 16th
at 6:00 PM.

DO YOU HAVE A
DISABILITY OR NEED HELP
WITH SPECIAL ED?

.....
THE OFFICE
OF THE
SPECIAL
EDUCATION
OMBUD CAN
HELP!



- We advocate for public school students and their families
- We provide comprehensive support for people navigating the special education system in NM



NEW MEXICO
Developmental
Disabilities
Council
nmddc.org

michelle.tregembo@state.nm.us
(505) 841-4565

The Special Ed Ombud serves ALL of New Mexico! If you have a child in any public school district please attend to learn what her office does and how they support families with kids in the special ed programs.

Zoom Link:

<https://hsc-unm.zoom.us/j/93777158227>

Satisfacer la Ombud

Únase a nosotros en zoom - Martes 16 de Julio
a las 6:00 p.m.

¿TIENE UNA DISCAPACIDAD
O NECESITA AYUDA
CON LA EDUCACIÓN ESPECIAL?

LA OFICINA DE
LA OMBUD DE
EDUCACIÓN
ESPECIAL
PUEDE
AYUDAR!



- Abogamos por los estudiantes de escuelas públicas y sus familias
- Brindamos apoyo integral para las personas que navegan por el sistema de education especial en NM



NEW MEXICO
Developmental
Disabilities
Council
nmddc.org

michelle.tregembo@state.nm.us
(505) 841-4565

¡El Defensor del Pueblo de Educación Especial sirve a TODO Nuevo México! Si tiene un hijo en cualquier distrito escolar público, asista para conocer qué hace su oficina y cómo apoyan a las familias con niños en los programas de educación especial.

Enlace de zoom:

<https://hsc-unm.zoom.us/j/93777158227>

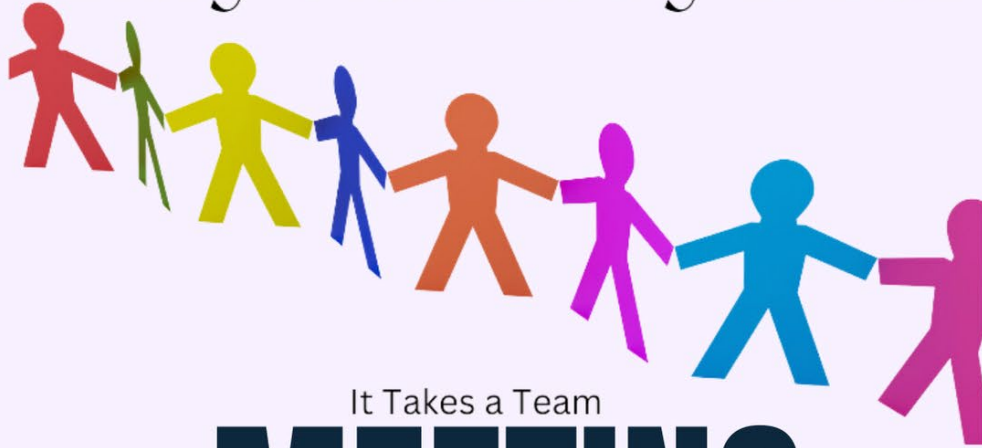
**IF YOUR CHILD IS ALREADY QUALIFIED FOR THE
MEDICALLY FRAGILE CASE MANAGEMENT PROGRAM,
THEY MAY QUALIFY FOR THE MEDICALLY FRAGILE
WAIVER.**

THE MEDICALLY FRAGILE WAIVER PROVIDES:

- Access to Medicaid for the individual who is Medically Fragile.
 - So, if you are at risk of losing your family's Medicaid, a referral to the Waiver should be submitted right away.
- Additional services beyond what may be available through the MCO, such as:
 - Funds to purchase necessary items not covered by insurance,
 - Funds to make modifications to your home to make it more accessible,
 - Additional hours for respite services,
 - Nutritional counseling from a registered dietitian,
 - Other services, such as vehicle modifications, are also available but pending a provider.

If you have questions about accessing the Medically Fragile Waiver, please reach out to your RN Case Manager.

Family Advisory Board



It Takes a Team

MEETING INVITATION



 September 3, 2024

 At 5:30 PM

 Zoom
<https://hsc-unm.zoom.us/j/91824512647>



CENTER FOR
DEVELOPMENT
& DISABILITY

email

nrajala@salud.unm.edu
to get Zoom link or with
any questions.

Open to all
families

NEWS FROM THE STATE

Turquoise Care is here!

Please let your Medically Fragile Nurse Case Manager know if you chose a new MCO.

Cited from <https://www.hsd.state.nm.us/turquoise-care/>

Turquoise Care is the new name for the New Mexico Medicaid Managed Care program has begun on July 1, 2024. Two new and two continuing Managed Care Organizations (MCOs) have been selected to serve the Medicaid Managed Care population.

All four of the Turquoise Care MCOs cover the same physical health, behavioral health, and long-term services and supports. Each MCO offers different Value-Added Services (VAS) in addition to the Medicaid covered benefits.

Review the summary of the Value-Added Services for each MCOs at:

[Turquoise-Care MCOs Value-Added-Services.pdf](#)

Members currently with BCBS, Presbyterian or Western Sky who switch MCOs during open enrollment have **90 days to switch MCOs starting 7/1/24.**

Available MCOs include:

- [Blue Cross Blue Shield of New Mexico](#) 
- [Molina Healthcare of New Mexico](#) 
- [Presbyterian Health Plan](#) 
- [United Healthcare Community Plan of New Mexico](#) 



The Human Services Department (the Department), Medical Assistance Division (MAD), is seeking approval from the Centers for Medicare and Medicaid Services regarding amendments to New Mexico’s Home and Community-Based Services (HCBS) 1915(c) Waivers, including the Medically Fragile Waiver (MFW).

The key components of proposed changes under the waiver amendments are to implement rate increases for many of the services under the waiver. (See attached memo for list of services)

The waiver amendments are available on the HSD website at <https://www.hca.nm.gov/2024-comment-period-open/> .

They are asking for your input.

You can provide input through 5pm, July 17th, by any of these means:

- Leaving comments at (505)827-1337
- Emailing HSD-madrules@hsd.nm.gov
- Mailing written comments to Human Services Department, Office of the Secretary, ATT: Medical Assistance Division Public Comments, P.O. Box 2348, Santa Fe, New Mexico 87504-2348
- Calling on WEDNESDAY, JULY 17, 2024, AT 9:00 A.M., MOUNTAIN TIME (MT). This is a conference call session at 800-747-5150, and enter Access Code: 044024

Looking for a place for your voice to be heard?

Bring exposure to the issues that matter to you in caring for your child who is medically fragile.

- What makes it easier?
 - What makes it more challenging?
 - What are your ideas for change?

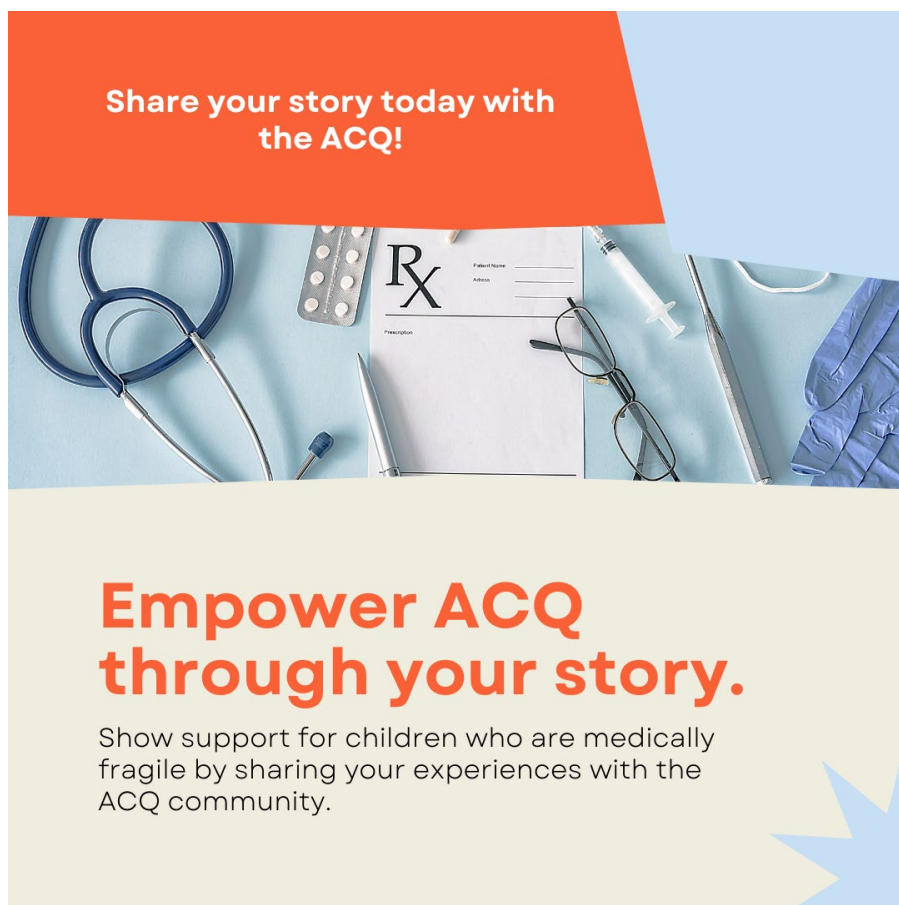
The Advisory Council on Quality Supports for People with Intellectual/Developmental Disabilities (ACQ) is listening.

They meet every other month on Zoom from 9am-1pm.

The next meeting is 8/8/24.

Come provide your comment during a public comment period, which occurs at the beginning of the meeting and the end of the meeting.

For more information, visit [Advisory Council on Quality \(nmhealth.org\)](https://www.nmhealth.org). Past meeting minutes are located here as well.



Share your story today with
the ACQ!

**Empower ACQ
through your story.**

Show support for children who are medically fragile by sharing your experiences with the ACQ community.

OUTSIDE RESOURCES

There is a Dance party for special needs individuals of all ages, that is held on the first Friday of every month at Harvest Church. It is free, and there is no need to RSVP, just show up and have fun. It is not religion-based, only hosted at the Church. Please share with anyone who may be interested. Next dance is 7/5/2024 7-9 PM.

5331 Montano Rd. NW Albuquerque, NM 87120

Phone: 505-899-0594

Hay una fiesta de baile para personas con necesidades especiales de todas las edades que se lleva a cabo el primer viernes de cada mes en Harvest Church. Es gratis y no es necesario confirmar su asistencia, simplemente preséntese y diviértase. No se basa en la religión, solo se realiza en la iglesia. Por favor compártelo con cualquiera que pueda estar interesado. El próximo baile es el 5/7/2024 de 7 a 9 p. m.

5331 Montano Rd. NW Albuquerque, NM 87120

Phone: 505-899-0594

