



CENTER FOR
DEVELOPMENT
& DISABILITY

BUILDING SUCCESS WITH MI VIA

Mi Via means "My Path" or "My Way"

Questions? Call us.

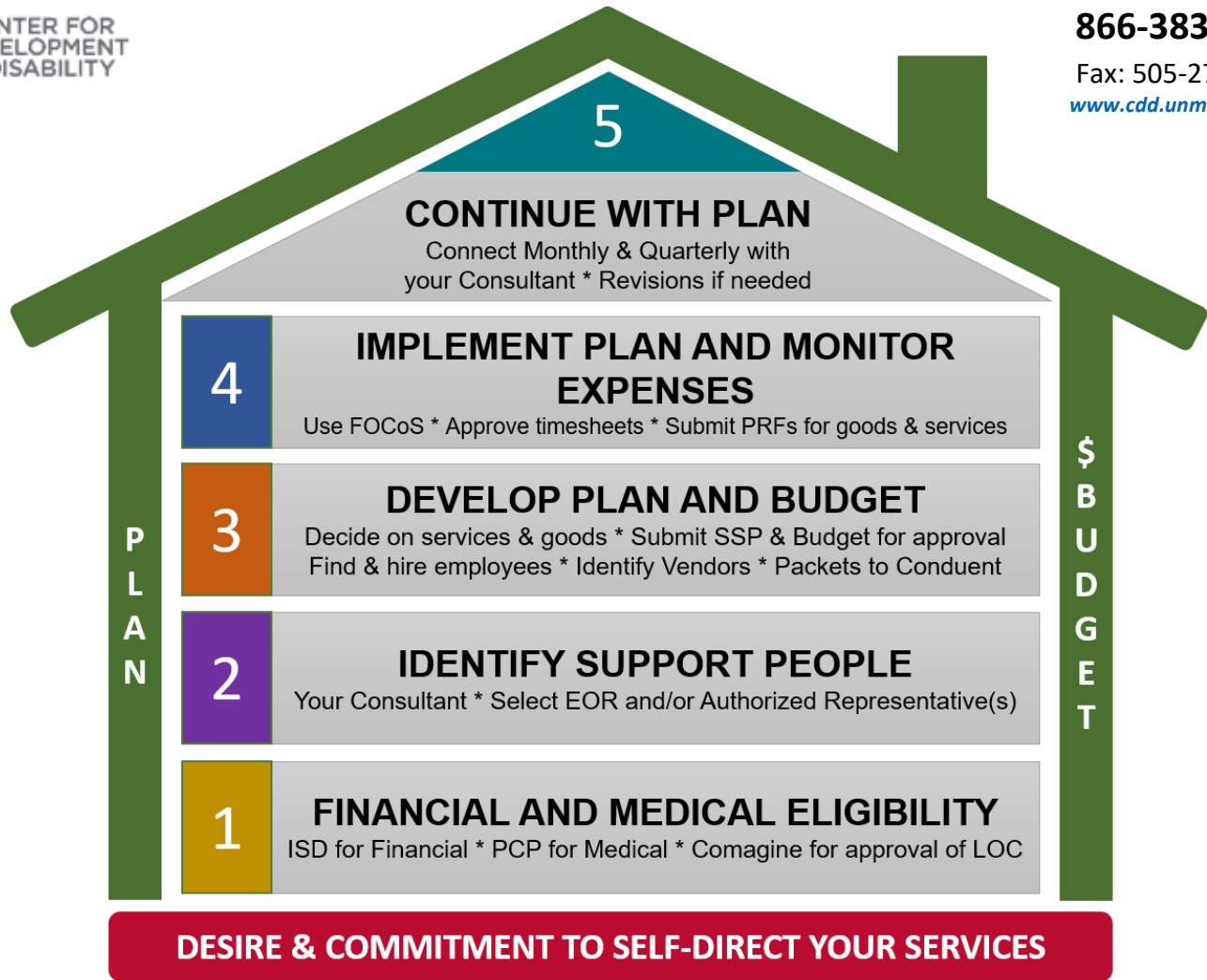
UNM CDD

Mi Via Consultants

866-383-3820

Fax: 505-272-5883

www.cdd.unm.edu/mivia



Acronyms & Key Terms:

EOR – Employer of Record

ISD – Income Support Division

LOC – Level of Care

PCP – Primary Care Provider (PCP)

SSP – Service & Support Plan

Conduent – Financial Management Agency (FMA) - Sets up EOR, employees & vendors. Coordinates payment of employees & vendors.

FOCoS – Online computer website where Participants and EORs approve timesheets & track expenses

PRF – Payment Request Form, to accompany invoices to Conduent

Comagine (formerly Qualis) – Third Party Assessor (TPA) - Review and approve annual LOC, Plan and Budget



Red or Green?

Mi Via is about making choices. The symbol of the red and green chiles are often used in Mi Via to illustrate Participants being able to make choices about their services and supports.

Rev. 4/19