

5-FU PUMP DISCONNECT INSTRUCTIONS

You are being sent home with a 5-FU Pump that is dispensing your chemotherapy.

When the pump is empty, use the following steps to disconnect your pump and flush your port.

MATERIALS NEEDED

- One pair of gloves (not pictured)
- Chemo disposal bag (not pictured)
- One Equashield Female Connector (**FC-1**)
- Two saline flush syringes
- One Heparin flush syringe

[Click to watch the online video instructions.](#)

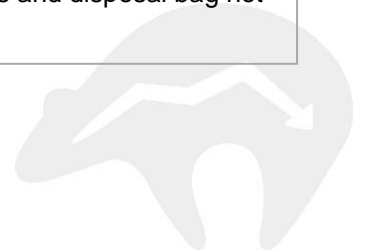
Or visit: vimeo.com/412738662



A 5-FU pump ready to disconnect.

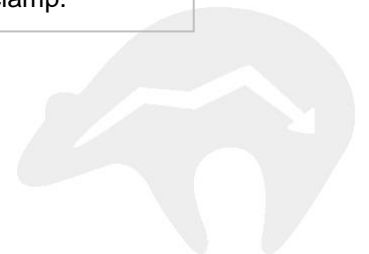
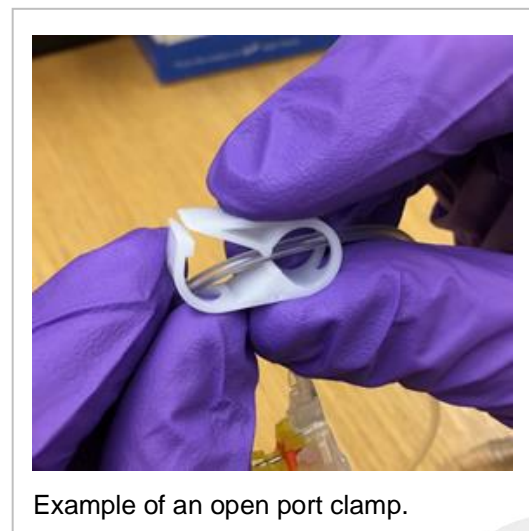
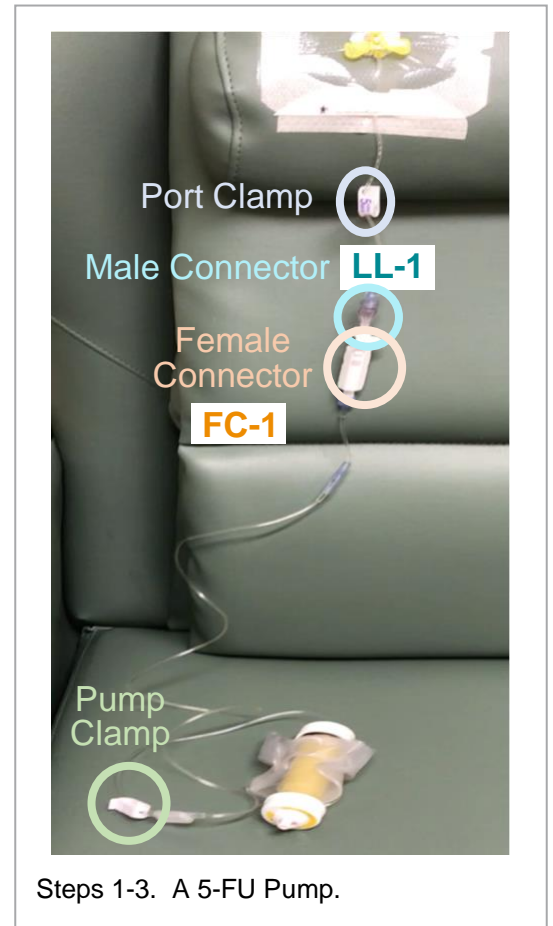


Female connector, saline syringes, and Heparin syringe you'll need to disconnect your pump. (Gloves and disposal bag not pictured).



INSTRUCTIONS

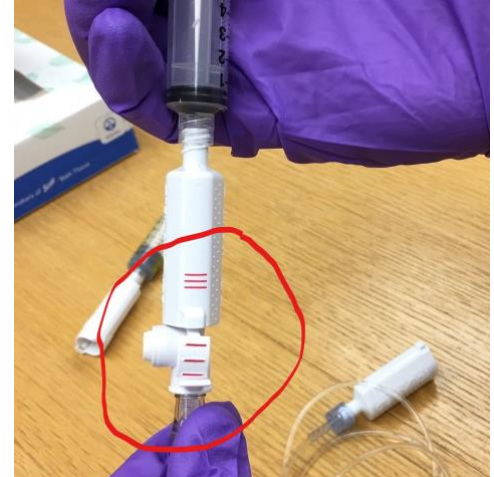
1. Prepare by:
 - i. Wash your hands and put on the gloves.
 - ii. Open each of the syringes and push the air out.
 - a. It's okay if a little saline comes out the top.
 - b. Recap each syringe to keep them clean.
 - iii. Open the pump clamp, move the line to the middle of the clamp, then close the pump clamp.
 - iv. Open the port clamp at the top of the line and keep it open for flushing.
 - v. From your kit, get your first saline syringe and the female connector. Take off the cap. Screw it onto the female connector.



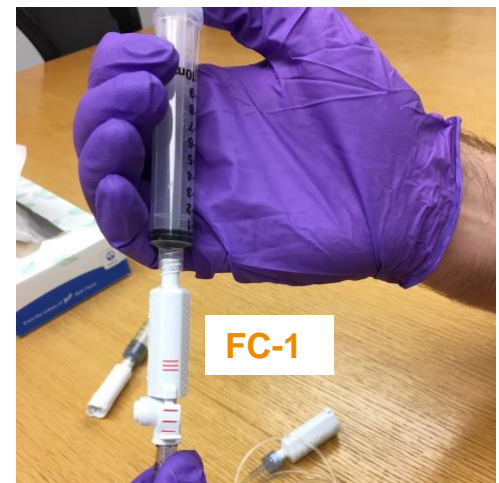
2. Disconnect the male and female connectors:
 - i. Where the lines line up, press down on the three lines that have more space between them, this is the lever on the male connector (**LL-1**).
 - ii. While pressing down on the male connector (**LL-1**), pull the female connector (**FC-1**) to disconnect.
 - iii. Leave the male connector (**LL-1**) attached to the port tubing.
 - iv. NOTE: Do not allow the male connector to touch your chest because it might get contaminated (dirty).

3. Flush the line by doing the following:
 - i. connect the saline flush syringe and female connector (**FC-1**) to the male connector (**LL-1**) attached to your port
 - a. align the red stripes and push the connectors together
 - ii. press the plunger on the saline flush syringe until it is empty.
 - a. you should not feel resistance
 - b. close the port clamp
 - iii. Unscrew the syringe but leave the female connector (**FC-1**) connected to the tubing.
 - a. you will reuse the same female connector (**FC-1**) for the next two flushes.

4. Flush the line again with a second saline flush:
 - i. From your kit, remove the cap from the second saline flush syringe.
 - ii. Connect the saline flush syringe to the female connector (**FC-1**) attached to your port:
 - a. open the port clamp.
 - b. press the plunger on the saline flush syringe until it is empty.
 - c. close the clamp.



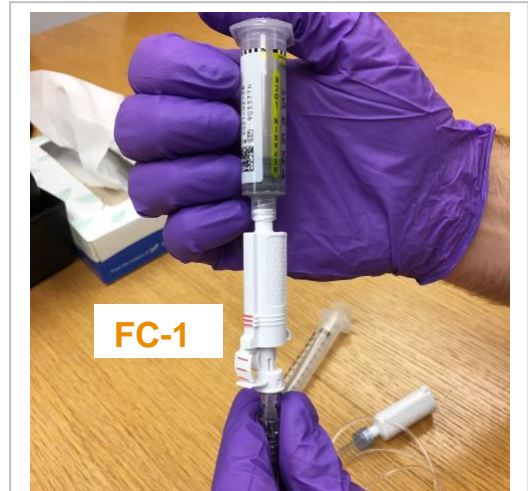
Step 3i. Red stripes aligned and the female and male connector pushed together.



Step 3ii. Press the plunger on the saline flush.



- d. unscrew the syringe but leave the female connector (**FC-1**) connected to the tubing.
 - e. you will reuse the same female connector (**FC-1**) for the last flush.
5. Flush the line a third time with a heparin flush:
 - i. Remove the cap from the heparin flush.
 - ii. Screw on the heparin flush syringe to the female connector (**FC-1**) attached to your port:
 - a. open the port clamp
 - b. press the plunger on the heparin flush syringe until it is empty
6. Remove the dressing and port by:
 - i. Remove the dressing from on top of your port.
 - ii. Press down on the clear butterfly wings of your port with your left hand (use your right hand if you're left-handed).
 - iii. Pull straight up on yellow butterfly wings with your right hand (use your left hand if you're left-handed).
 - iv. Apply the Band-Aid over the port.
7. Put the empty 5-FU pump with the tubing and female connector (**FC-1**) in the chemo disposal bag.
 - i. Bring the chemo disposal bag to your next appointment. We will dispose of the empty pump, tubing and female connector (**FC-1**) for you.



Step 5iib. Aligned heparin flush syringe and female connector.

