



THE UNIVERSITY OF NEW MEXICO ♦ HEALTH SCIENCES CENTER
UNM HOSPITALS

Bernalillo County Commissioner Report

December 31, 2016



THE UNIVERSITY OF NEW MEXICO • HEALTH SCIENCES CENTER

UNM HOSPITALS

Index

	Page
Bernalillo County patient encounters by funding source	3
Financial assistance to patients by county	4
UNM Care and UNMCI enrollment and numbers assigned to First Choice	5
Emergency room data on patients leaving without being seen and average hours from arrival to disposition	6
Number of FTE's and retention rate for RN, pharmacy, pulmonary, physical therapist and radiology technicians	7
Quarterly statement of net assets	8
Quarterly statement of revenues, expenses and changes in net assets	9
A Number of indigent Bernalillo County resident <i>outpatients</i> broken out by zip code and the cost of care for such patients	10
B Number of indigent Bernalillo County resident <i>inpatients</i> broken out by zip code and the cost of care for such patients	10
C Primary Services provided to Bernalillo County residents by primary service type	11
D Primary reasons for Bernalillo County indigent resident visits	12
E Emergency room wait times for Bernalillo County residents	10
G Number of County residents applying for and approved for financial assistance	13
UH and Behavioral Statistics	14
2016 Revenue by Payor	15
2016 Mill Levy Expense	16
2016 Mill Levy Expense by Specialty	17
2016 Mill Levy Expense - Behavioral Only	18

**Encounters - Bernalillo County
 For the six months ended December 31, 2016**

Source	Bernalillo County Encounters
Charity Care - Bernalillo County	4,302
EMSA	266
IHS	1,232
Medicaid	175,022
Medicare	120,067
Uninsured	19,451
HMO's & Insurance	104,061
All Other	23,944
Total Encounters	448,345

Native American Encounters **37,428**

Encounters - Bernalillo County consist of Inpatients and Outpatients who provided a Bernalillo County zip code during their registration. Categories are based on Primary Payer Code. Native American Encounters are based on race as provided during registration, are not restricted to only Bernalillo County zip codes and could be duplicate of the Bernalillo encounters by payer above.

Financial Assistance to Patients by County*
For the six months ended December 31, 2016

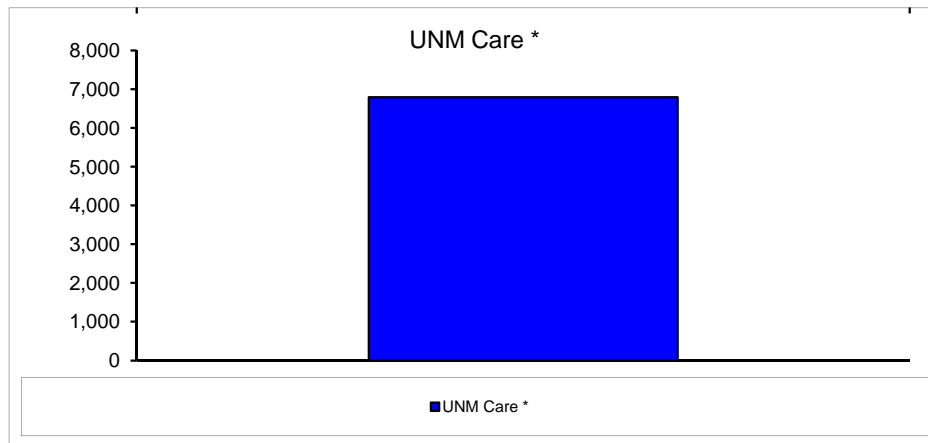
County	Charity Care Cost	Uninsured Cost	Total Uncompensated Care Cost
Bernalillo	16,296,981	\$ 13,493,086	\$ 29,790,066
Catron	-	18,293	18,293
Chaves	46	159,632	159,678
Cibola	112	175,315	175,427
Colfax	11	35,621	35,632
Curry	1,611	15,745	17,356
De Baca	108	-	108
Dona Ana	270	149,058	149,328
Eddy	985	36,565	37,550
Grant	7	74,488	74,495
Guadalupe	8,809	61,085	69,894
Harding	-	-	-
Hidalgo	-	774	774
Lea	43,087	12,270	55,357
Lincoln	18	73,242	73,260
Los Alamos	-	22,212	22,212
Luna	6	14,306	14,313
Mc Kinley	6	207,488	207,494
Mora	-	663	663
Otero	2,865	33,559	36,424
Quay	-	11,896	11,896
Rio Arriba	704	91,290	91,994
Roosevelt	-	10,836	10,836
San Juan	753	324,323	325,077
San Miguel	391	5,851	6,243
Sandoval	45,787	1,113,139	1,158,927
Santa Fe	10,841	553,298	564,139
Sierra	2,894	4,480	7,374
Socorro	311	113,747	114,058
Taos	144,275	162,738	307,012
Torrance	2,837	306,808	309,645
Union	-	-	-
Valencia	53,292	1,447,349	1,500,641
Out Of State	-	1,158,593	1,158,593
Grand Total	\$ 16,617,009	\$ 19,887,751	\$ 36,504,760

* Based on primary and secondary coverage

Total Uncompensated Care Cost: Cost of care for UNM Hospitals is the actual cost of providing care - salary, benefits, supplies, drugs, blood, organs, utilities, depreciation, contracts, services.

**UNM Care
 As of December 2016**

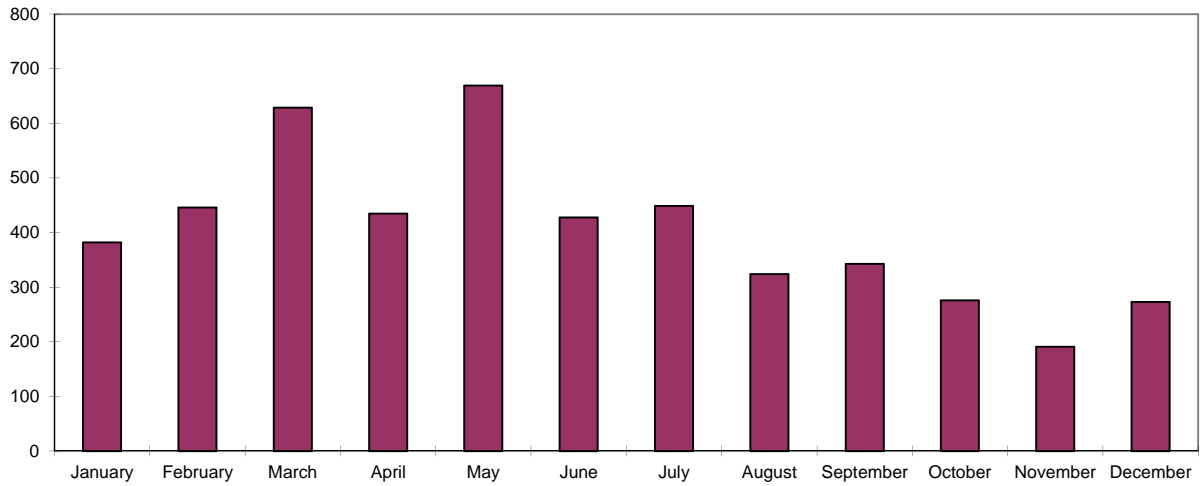
Category	Enrollment
UNM Care *	6,793



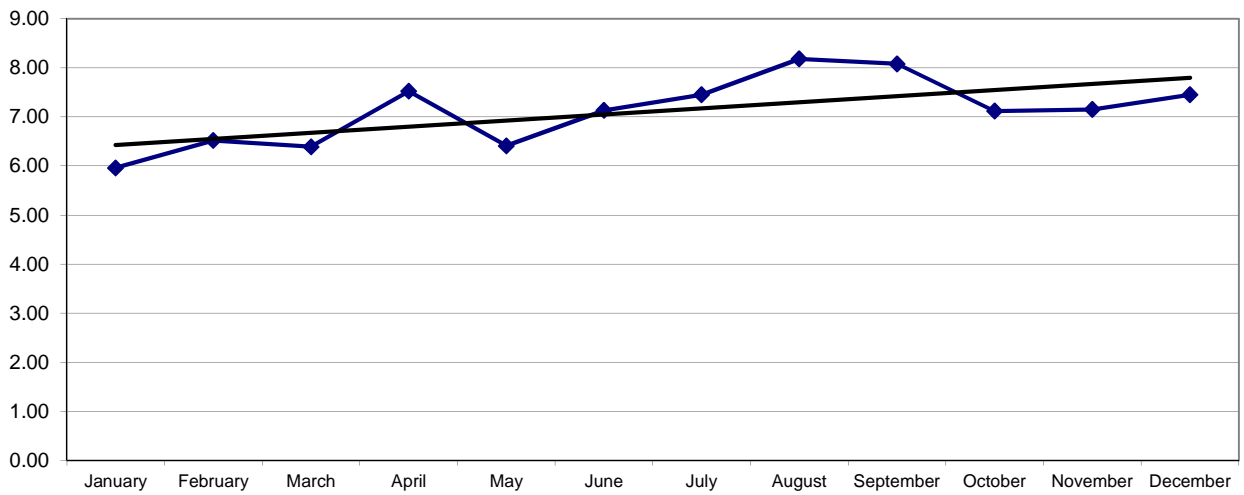
* UNM Care includes 128 Native American Enrollees as of 12/31/2016.

**Emergency Services
 For the Twelve months ending December 31, 2016**

Patients left without being seen



Average Hours from Arrival to Disposition





**Number of FTE's and Retention Report
For the six months ended December 31, 2016**

Category	Number of FTE's as of June 2016	Number of FTE's as of December 2016	Hires Headcount	Terms Headcount	Rolling Retention Rate
RN's	1,867	2,050	109	144	87.03%
Pharmacy	167	183	12	7	90.51%
Pulmonary	71	77	1	5	93.74%
Physical Therapists	48	61	2	4	87.34%
Radiology Techs	140	145	3	6	91.13%

NOTE: The number of FTE's for selected categories is listed above; however, it should be noted that the retention rate is calculated using the hires and terms for each respective category.

Statements of Net Assets

December 31, 2016 and June 30, 2016

Assets	December 2016	June 2016
<i>(In Thousands)</i>		
Current assets:		
Cash and cash equivalents	\$ 183,675 *	143,268
Marketable securities	34,632	34,864
Receivables:		
Patient, net	133,672	130,988
University of New Mexico	299	1,472
Estimated third-party payor settlements	60,609	58,460
Bernalillo County treasurer	25,019	1,740
Other	31,095	31,320
Total current assets	<u>469,001</u>	<u>402,112</u>
Noncurrent assets:		
Assets whose use is limited:		
Held by trustee	20,806	16,127
By UNM Hospital Clinical Operations Board	21,335	21,040
Capital assets, net	<u>224,634</u>	<u>232,499</u>
Total assets	<u>735,776</u>	<u>671,778</u>
 Liabilities		
Current liabilities:		
Accounts payable	55,064	62,288
Payable to University of New Mexico	108,436	53,132
Estimated third-party payor settlements	67,431	52,606
Interest payable bonds	88	88
Other accrued liabilities	53,254	52,254
Total current liabilities	<u>284,273</u>	<u>220,368</u>
Bonds payable	<u>108,965</u>	<u>108,965</u>
Total liabilities	<u>393,238</u>	<u>329,333</u>
 Net Assets		
Restricted for expendable grants, bequests, and contributions	16,755	15,355
Restricted for trust indenture and debt agreement	20,806	16,128
Unrestricted net assets	189,308	187,428
Assets invested in capital	<u>115,669</u>	<u>123,534</u>
Total net assets	<u>\$ 342,538</u>	<u>\$ 342,445</u>

* Note - Increase in cash for December 2016 is a result of the increase in payables.

UNM HOSPITALS

Statements of Revenues, Expenses, and Changes in Net Assets

For the six months ended December 31, 2016

<i>(In Thousands)</i>	<u>December 2016</u>
Operating revenues:	
Net patient service	\$ 451,528
Other	11,277
Total operating revenues	<u>462,805</u>
Operating expenses:	
Employee Compensation and Benefits	248,983
Medical services	92,958
Medical supplies	89,841
Occupancy/Equipment/Depreciation	42,904
Purchased services	28,931
Other	13,285
Total operating expenses	<u>516,902</u>
Operating loss	<u>(54,097)</u>
Nonoperating revenues (expenses):	
Bernalillo County Mill Levy	47,989
State appropriation	5,821
Investment income (dividends, gains and losses)	169
Interest Expense	(1,586)
Other Revenue and (Expense)	(400)
Land and Permanent Fund	409
Bequests and contributions	1,788
Net nonoperating revenues	<u>54,190</u>
Increase in net assets	93
Net assets, beginning of year	342,445
Net assets, end of year	<u>\$ 342,538</u>

Financial Assistance to Bernalillo County Patients by Zip Code
For the six months ended December 31, 2016

- A - Number of Indigent Bernalillo County resident outpatients by zip code and cost of care**
B - Number of Indigent Bernalillo County resident inpatients by zip code and cost of care
F - Total cost of care for Bernalillo County indigent patients by zip code with cost methodology

Bernalillo County Zip	Inpatient Count	Inpatient Charity Care and Unisured Cost	Outpatient Count	Outpatient Charity Care and Unisured Cost	Total Patient Count	Total Patient Charity Care and Unisured Cost
87008	3	\$ 40,101	120	\$ 37,276	123	\$ 77,378
87022	-	-	150	44,531	150	44,531
87047	-	-	58	21,955	58	21,955
87059	16	43,091	246	47,576	262	90,667
87101	4	18,735	29	27,614	33	46,349
87102	64	502,341	2,263	1,054,436	2,327	1,556,777
87103	-	-	34	21,763	34	21,763
87104	33	288,404	848	191,195	881	479,599
87105	189	2,731,380	7,649	2,080,395	7,838	4,811,775
87106	51	2,817,813	1,628	635,808	1,648	3,453,621
87107	61	563,712	2,193	643,324	2,254	1,207,036
87108	116	2,694,590	3,823	1,625,374	3,939	4,319,965
87109	54	608,093	1,615	485,499	1,669	1,093,593
87110	60	1,457,063	2,048	601,128	2,108	2,058,191
87111	33	129,629	1,286	461,716	1,319	591,345
87112	65	459,380	1,909	791,921	1,974	1,251,301
87113	15	57,286	476	79,783	491	137,069
87114	41	353,337	1,500	585,633	1,541	938,970
87115	-	-	5	507	5	507
87116	1	-	20	33,213	21	33,213
87117	-	-	1	500	1	500
87119	-	-	11	1,024	11	1,024
87120	55	527,966	1,872	475,014	1,927	1,002,979
87121	233	1,474,508	7,635	3,062,387	7,868	4,536,895
87122	3	8,293	191	58,780	194	67,073
87123	82	483,219	2,693	953,232	2,775	1,436,451
87125	9	83,192	122	29,462	131	112,653
87131	-	-	7	1,066	7	1,066
87151	-	-	34	23,726	34	23,726
87153	-	-	3	-	3	-
87154	1	2,562	34	457	35	3,019
87158	-	-	-	-	-	-
87176	-	-	99	4,224	99	4,224
87181	1	49,258	52	23,382	53	72,640
87184	1	6,358	4	2,891	5	9,248
87185	-	-	1	-	1	-
87187	1	3,685	4	156	5	3,841
87190	1	181,657	17	1,661	18	183,318
87191	-	-	21	1,212	21	1,212
87192	2	15,110	82	2,971	84	18,081
87193	1	8,523	53	11,389	54	19,912
87194	1	6,578	28	-	29	6,578
87195	1	576	85	10,695	86	11,271
87196	-	-	38	980	38	980
87197	4	1,099	33	8,002	37	9,101
87198	-	-	71	16,147	71	16,147
87199	2	300	44	12,222	46	12,522
Grand Total	1,204	\$ 15,617,839	41,135	\$ 14,172,227	42,308	\$ 29,790,066

C - Financial Assistance to Bernalillo County Patients by Service Type
For the six months ended December 31, 2016

Bernalillo County Zip	Cancer Count	Medicine Count	Pediatrics Count	Surgery Count	Emergency Medicine Count	Neurology Count	OBGYN Count	Orthopedics Count	Psychiatry Count	Other Count	Total Count
87008	34	4	-	1	-	-	2	-	19	63	123
87022	18	-	-	-	1	2	-	-	15	114	150
87047	7	1	-	-	-	-	-	1	8	41	58
87059	37	13	1	3	4	2	3	1	47	151	262
87101	2	2	-	-	-	2	-	-	6	21	33
87102	139	125	2	9	11	18	22	6	483	1,507	2,322
87103	1	-	-	1	-	-	-	-	9	23	34
87104	54	39	1	2	6	6	7	1	148	617	881
87105	567	211	5	41	18	33	69	14	1,014	3,700	5,672
87106	105	79	1	10	13	13	13	2	374	1,066	1,676
87107	165	110	1	9	14	14	21	4	436	1,480	2,254
87108	225	183	6	18	22	10	39	7	916	2,509	3,935
87109	128	79	4	12	13	14	15	3	321	1,080	1,669
87110	197	115	3	6	12	17	30	2	527	1,199	2,108
87111	99	67	-	13	4	11	10	2	282	831	1,319
87112	170	127	3	5	19	20	10	6	451	1,162	1,973
87113	58	19	1	2	4	8	4	1	53	339	489
87114	182	68	1	3	12	12	22	5	313	923	1,541
87115	-	2	-	-	-	-	-	-	4	1	5
87116	4	-	-	-	1	-	1	-	-	13	21
87117	-	-	-	-	-	-	-	-	1	-	1
87119	-	1	-	-	-	-	-	-	1	9	11
87120	227	115	6	11	13	14	5	5	371	1,157	1,924
87121	646	2,499	11	37	38	61	126	15	805	5,787	10,025
87122	38	7	1	-	1	-	-	1	71	75	194
87123	183	146	7	12	20	23	23	6	398	1,953	2,771
87125	23	6	-	1	2	-	2	-	29	68	131
87131	-	-	-	-	-	-	-	-	3	4	7
87151	-	-	-	-	-	-	4	-	13	17	34
87153	-	-	-	-	-	-	-	-	2	1	3
87154	2	2	-	-	2	-	-	-	6	23	35
87158	-	-	-	-	-	-	-	-	-	-	-
87176	3	8	-	-	-	1	-	-	21	66	99
87181	16	-	-	-	-	1	-	-	1	35	53
87184	1	2	-	-	-	-	-	-	-	2	5
87185	-	-	-	-	-	-	-	-	-	1	1
87187	2	2	-	-	-	-	1	-	-	-	5
87190	7	2	-	-	-	-	-	1	2	6	18
87191	7	1	-	-	-	-	-	-	1	12	21
87192	15	10	-	1	-	2	-	-	6	50	84
87193	3	4	-	-	1	-	-	-	5	41	54
87194	2	1	-	-	1	-	-	-	2	23	29
87195	6	2	-	-	1	-	-	-	15	62	86
87196	1	2	-	-	-	-	-	-	8	27	38
87197	1	2	1	-	1	-	-	-	12	20	37
87198	6	2	-	1	1	-	-	-	13	48	71
87199	4	2	-	-	-	-	-	-	7	33	46
Grand Total	3,385	4,060	55	198	235	284	429	83	7,219	26,360	42,308

Includes inpatient and outpatient

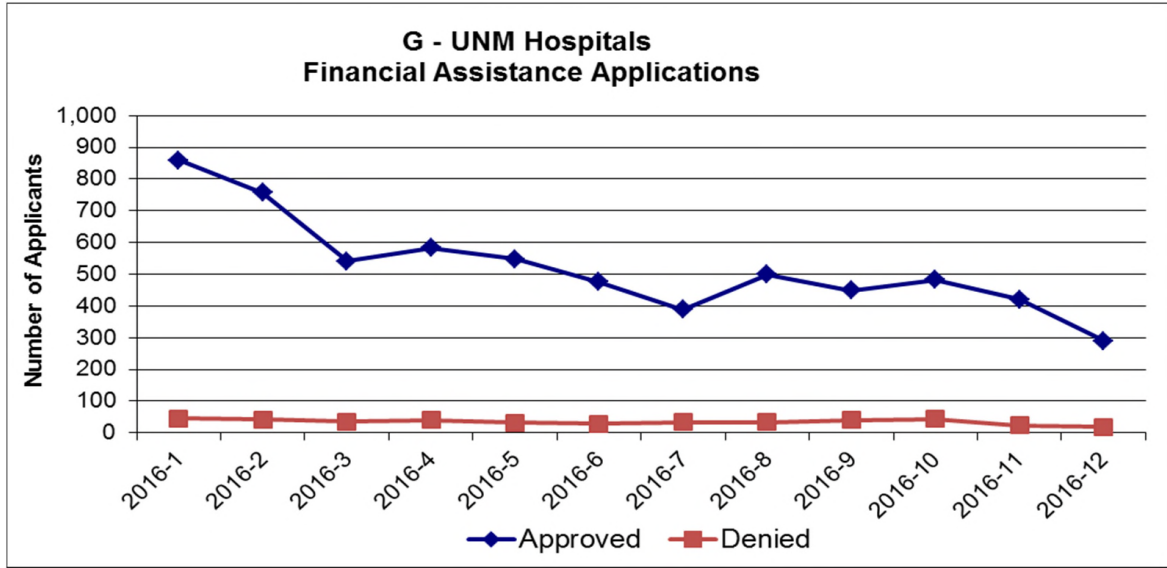
**D - Primary Reason for Bernalillo County Indigent Resident Visits
For the 6 Quarters ending December 31, 2016**

Description	Examples of Illnesses						
	Q2 FY17	Q1 FY17	Q4 FY16	Q3 FY16	Q2 FY16	Q1 FY16	
Mental Disorders	2,144	4,355	5,307	4,092	2,167	4,635	Alcohol abuse, depression, post traumatic stress disorder
Factors Influencing Health Status and Contact with Health Service	1,871	3,801	3,247	4,336	2,587	3,971	Routine exam, follow up to surgery, child and infant wellness checks, etc
Diseases of Musculoskeletal and Connective Tissue	1,320	2,682	2,164	3,417	2,026	2,369	Joint pain, back pain, pain in limb, arthritis
Endocrine, Nutritional, and Metabolic Diseases and Immunity Disr	785	1,460	2,142	3,533	1,385	2,294	Abdominal pain, chest pain, cough, headache, rash, shortness of breath
Signs, Symptoms and Ill-Defined Conditions	665	2,514	1,186	5,340	1,107	1,541	Sleep Apnea, ear infection, carpal tunnel, diseases of the eye, migraine
Diseases of Nervous System and Sense Organs	966	859	1,093	1,113	859	1,486	Diabetes, high blood cholesterol, diseases of thyroid
Diseases of Circulatory System	1,775	1,505	1,167	2,209	717	1,340	Bone fractures, sprains, wounds, contusions (bruises)
Injury and Poisoning	1,286	2,466	1,152	2,392	728	1,326	Hypertension, heart failure, etc.
Diseases of Respiratory System	396	804	1,066	279	422	1,224	Cancer, benign growths
Diseases of Genitourinary System	141	897	1,106	996	640	1,195	Urinary tract infection, kidney stones, kidney disease
Neoplasms (abnormal new growth of tissue)	59	1,223	214	1,730	541	712	Sore throat, respiratory infection, sinusitis, asthma, pneumonia
Diseases of Digestive System	201	695	869	1,421	391	656	Esophageal reflux, hernia, diseases of colon, diseases of liver
Diseases Skin and Subcutaneous Tissue	680	601	337	1,528	77	645	
Complications of Pregnancy, Childbirth, and the Puerperium	279	1,059	451	871	388	525	Psoriasis, cellulitis and abscess
Infectious and Parasitic Diseases	148	301	214	333	412	159	Hepatitis, viral infections
Congenital Anomalies	78	163	28	352	88	133	Anemia, etc.
Diseases of Blood and Blood Forming Organs	82	162	84	348	100	76	
Newborn (Perinatal)	39	80	33	118	104	43	
Other (prescription pick-up, etc.)	1,041	2,724	1,400	3,033	1,679	4,021	
Total Visits	13,957	28,351	23,262	37,443	16,418	28,351	

Consists of indigent patients who provided a Bernalillo County zip code during their registration. Categories are based on CMS diagnosis codes.



For the twelve months ended December 31, 2016



UNMH Statistics

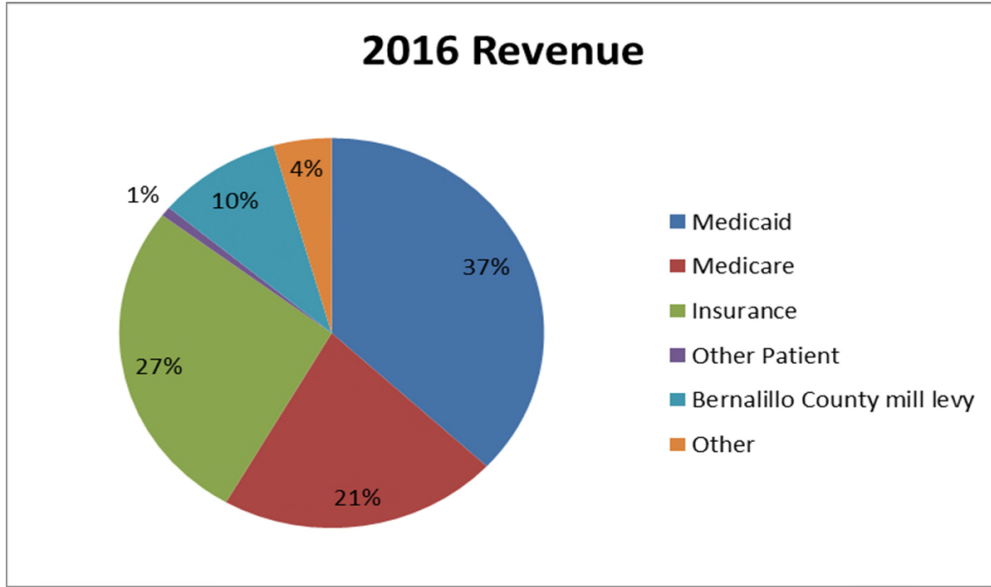
For the six months ended December 31, 2017 and twelve months ended June 30, 2016

	FY17 Actual	FY16 Actual
Patient Days		
Adult	63,287	112,936
Pediatric	20,269	40,353
Newborn	2,518	5,321
Total Patient Days	86,074	158,610
Total Equivalent Observation Days	5,955	13,411
Other Stats		
Clinic Visits	254,158	520,038
Emergency/Urgent Care	47,406	102,188
Operations	10,294	19,947
Births	1,472	3,024

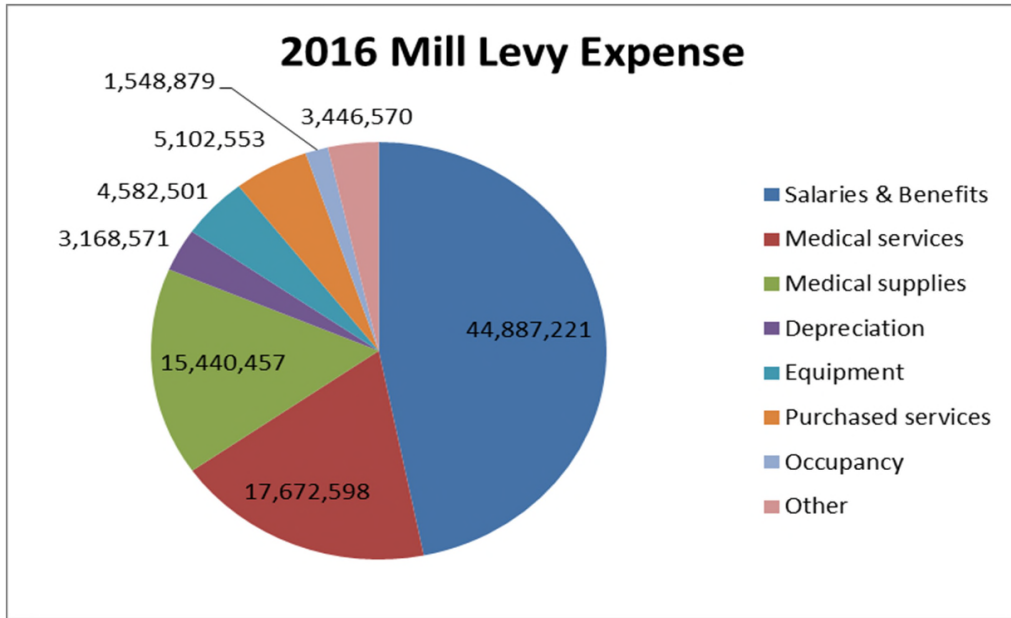
Behavioral Statistics

For the six months ended December 31, 2017 and twelve months ended June 30, 2016

	FY17 Actual	FY16 Actual
Patient Days	11,214	23,242
Other Stats		
Outpatient visits	29,153	59,738
Midlevel	49,700	93,204
Methadone & Buprenorphine	74,283	143,151

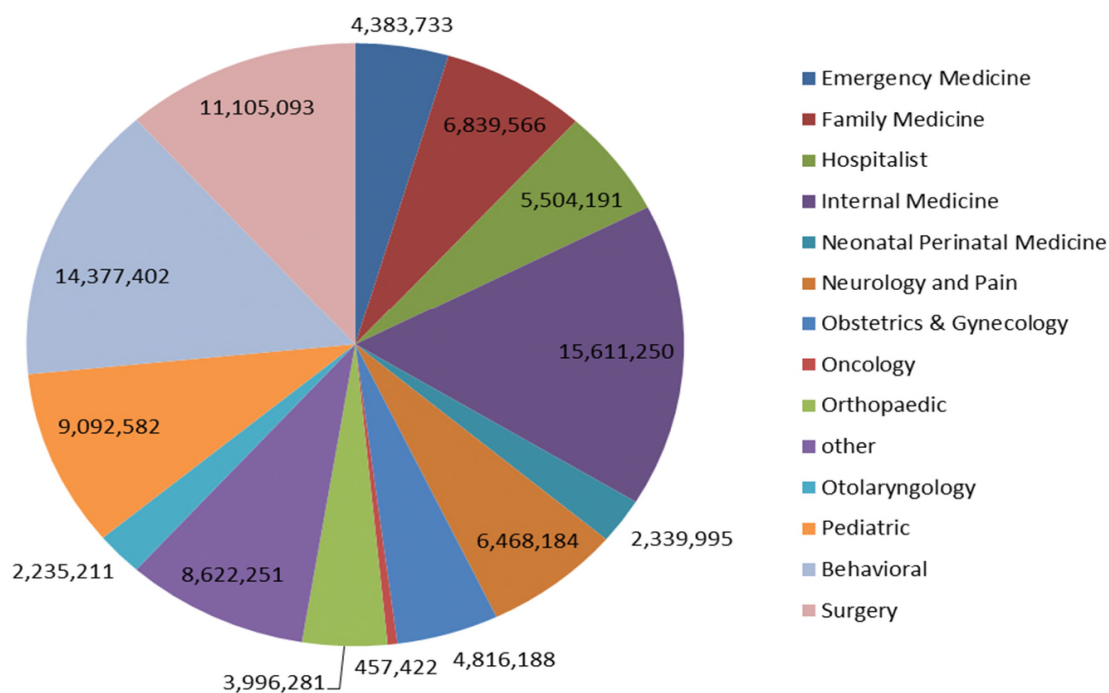


Medicaid	\$ 374,523,238
Medicare	215,116,785
Insurance	274,743,916
Other Patient	8,083,381
Bernalillo County mill levy	95,849,349
Other	44,837,527

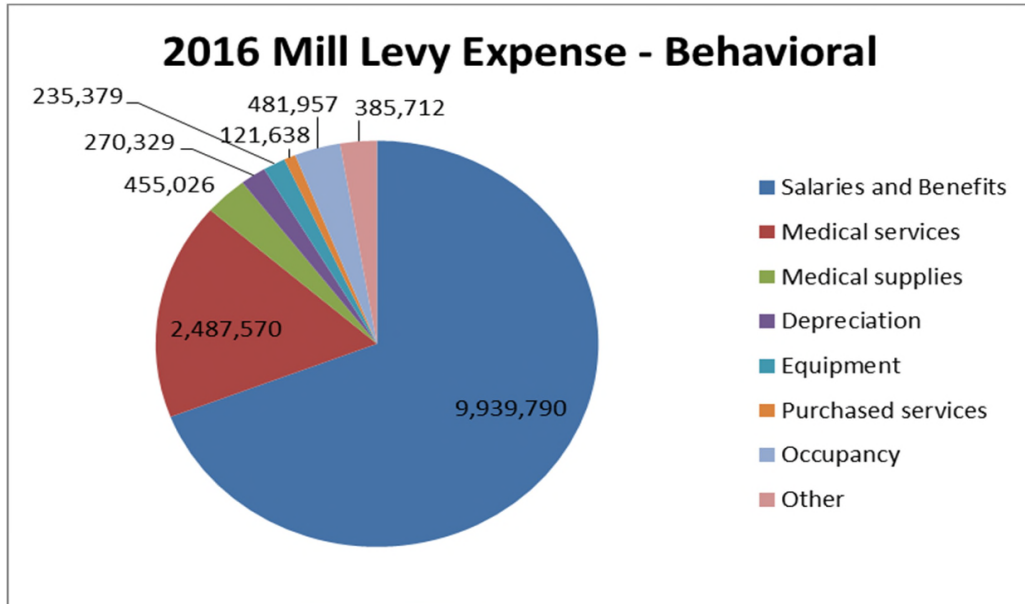


Salaries & Benefits	\$	44,887,221
Medical services		17,672,598
Medical supplies		15,440,457
Depreciation		3,168,571
Equipment		4,582,501
Purchased services		5,102,553
Occupancy		1,548,879
Other		3,446,570
Total Expense	\$	95,849,349

2016 Mill Levy Expense by Specialty



Emergency Medicine	\$	4,383,733
Family Medicine		6,839,566
Hospitalist		5,504,191
Internal Medicine		15,611,250
Neonatal Perinatal Medicine		2,339,995
Neurology and Pain		6,468,184
Obstetrics & Gynecology		4,816,188
Oncology		457,422
Orthopaedic		3,996,281
other		8,622,251
Otolaryngology		2,235,211
Pediatric		9,092,582
Behavioral		14,377,402
Surgery		11,105,093
Total	\$	95,849,349



Salaries and Benefits	\$	9,939,790
Medical services		2,487,570
Medical supplies		455,026
Depreciation		270,329
Equipment		235,379
Purchased services		121,638
Occupancy		481,957
Other		385,712
Total Expense	\$	14,377,402

